

Dott. Arch. Massimo DESMERO
 Via Roma n°59 - 0171 260476
 12011 - Borgo San Dalmazzo (CN)

Dott. Arch. Lorenzo MARTINELLI
Dott. Arch. Sergio ZORNIOTTI
 Via Staffarda n°7 - 0172 636426
 12045 - Fossano (CN)

COMUNE	LIMONE PIEMONTE
OGGETTO	INTERVENTO TURISTICO RICETTIVO
	LOCALITA' CAMPO PRINCIPE ZONA URBANISTICA 3/TR2/G.2
COMMITT.	Porta Rossa S.p.A.

TIPOLOGIA EDILIZIA - TURISTICO RICETTIVA
EDIFICI A+B - Calcoli planovolumetrici

Pratica	3296 - 1703
Data	MAGGIO 2019
Aggiorn.	
Aggiorn.	

Scala
1:200

Tavola
9.g

PARAMETRI URBANISTICI IN PROGETTO

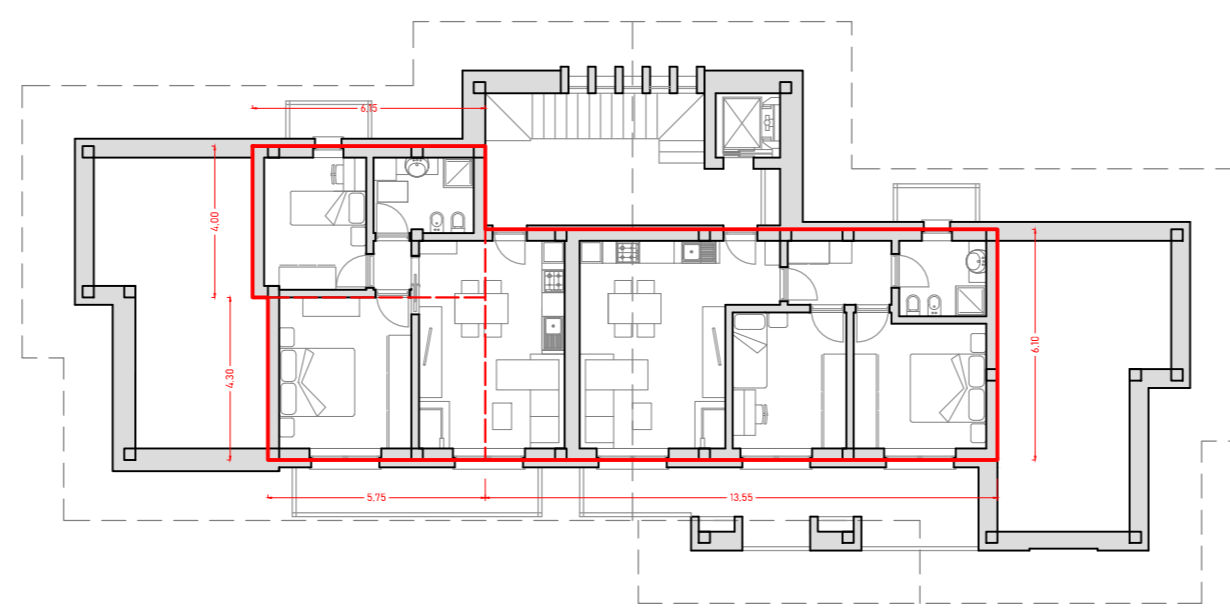
SUPERFICIE COPERTA
 $1.10 \times 4.00 + 9.55 \times 8.30 + 4.05 \times 6.10 + 1.60 \times 5.10 + 11.70 \times 8.30 + 1.10 \times 4.00 + 8.40 \times 1.70 + 8.10 \times 2.20 =$
Totale = 251.8 mq

SUPERFICIE UTILE LORDA AUTORIMESSE
 $(27.60 + 29.50) \times 14.30 / 2 + (14.70 + 14.30) \times 3.30 / 2 + 11.65 \times 6.80 + (3.90 + 3.45) \times 4.75 / 2 =$
554.40 mq

SUPERFICIE UTILE LORDA APPARTAMENTI VACANZA
 Piano terreno
 $1.10 \times 4.00 + 9.55 \times 8.30 + 4.05 \times 6.10 + 1.60 \times 5.10 + 11.70 \times 8.30 + 1.10 \times 4.00 =$
218.1 mq
 Piano primo
 $1.10 \times 4.00 + 9.55 \times 8.30 + 4.05 \times 6.10 + 1.60 \times 5.10 + 11.70 \times 8.30 + 1.10 \times 4.00 =$
218.1 mq
 Piano secondo
 $6.15 \times 4.00 + 5.75 \times 4.30 + 13.55 \times 6.10 =$
132.0 mq
Totale = 568.20 mq

VOLUME
 $568.20 \times 2.85 =$
Totale = 1619.37 mc

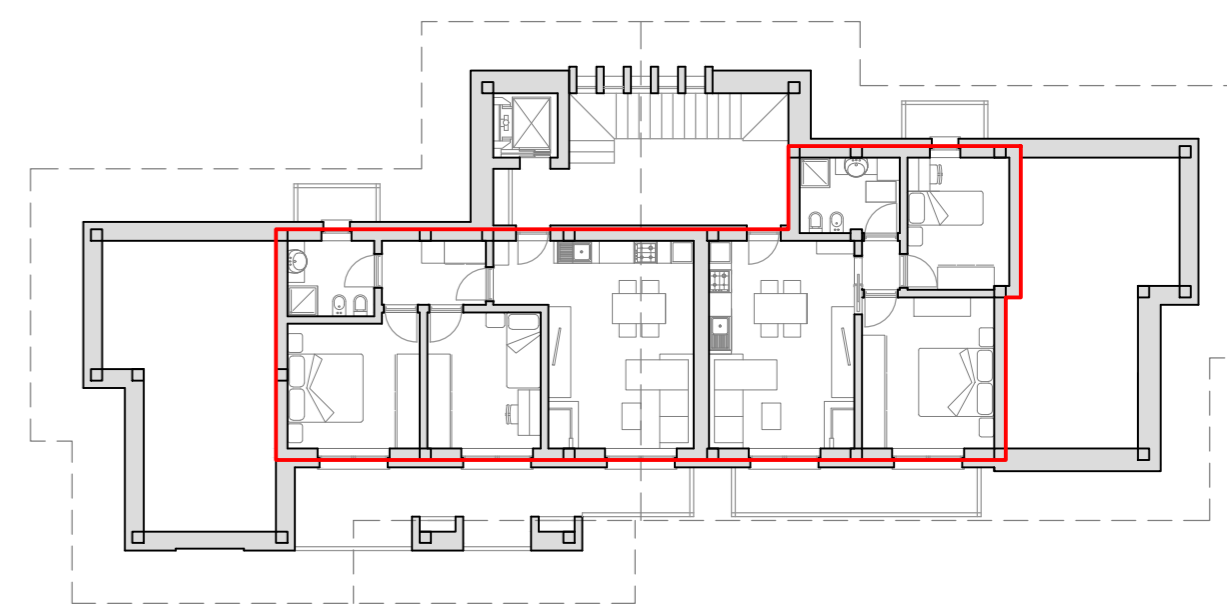
EDIFICIO B



Calcolo Vol. Appart. Vacanza

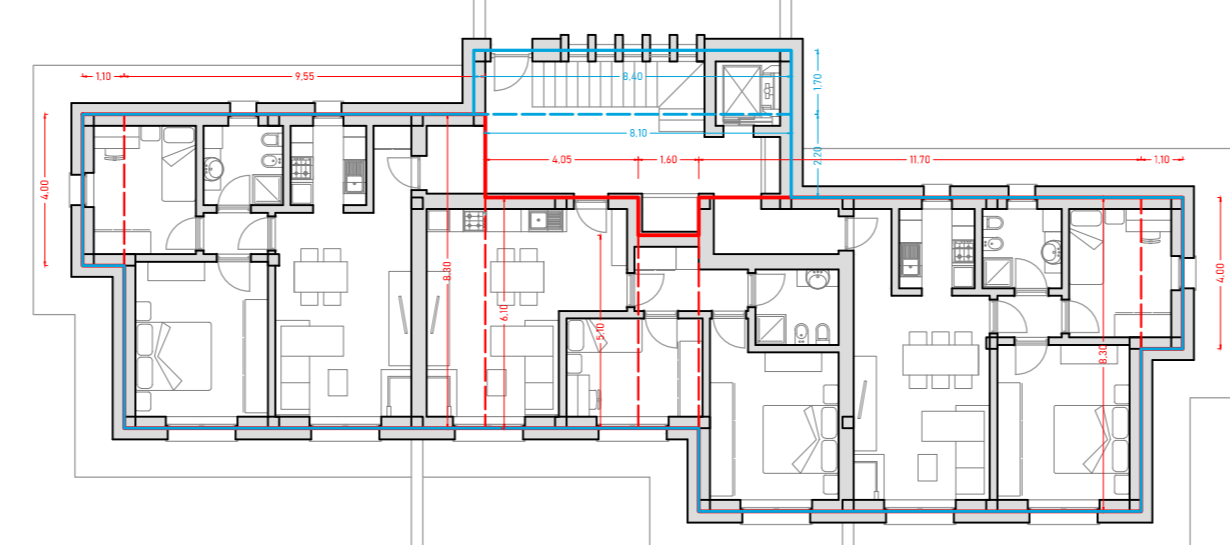
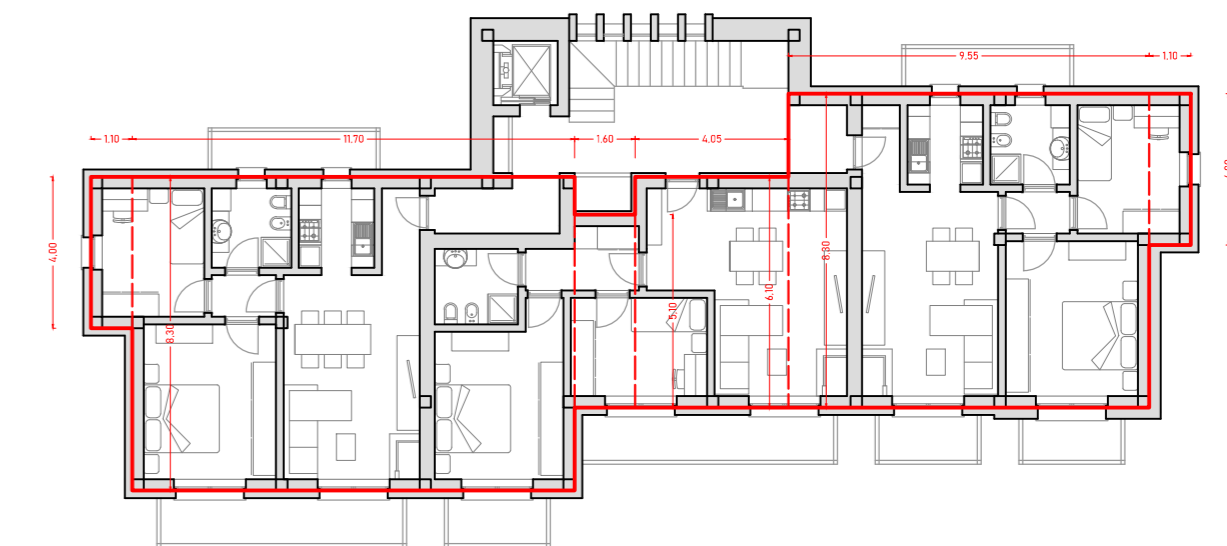
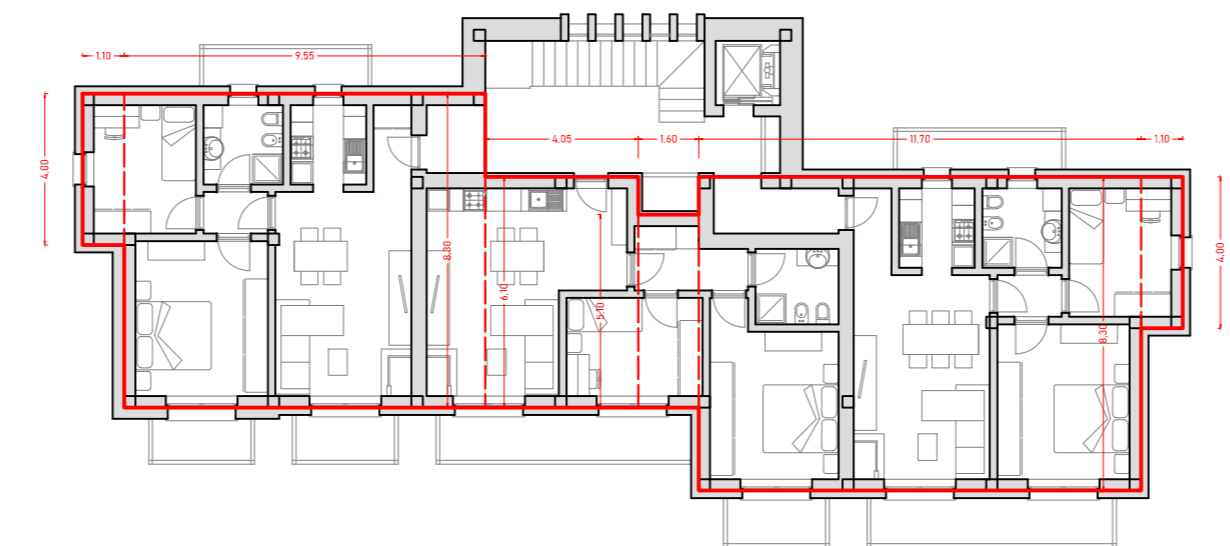
PIANTA PIANO SOTTOTETTO
Scala 1:200

EDIFICIO A



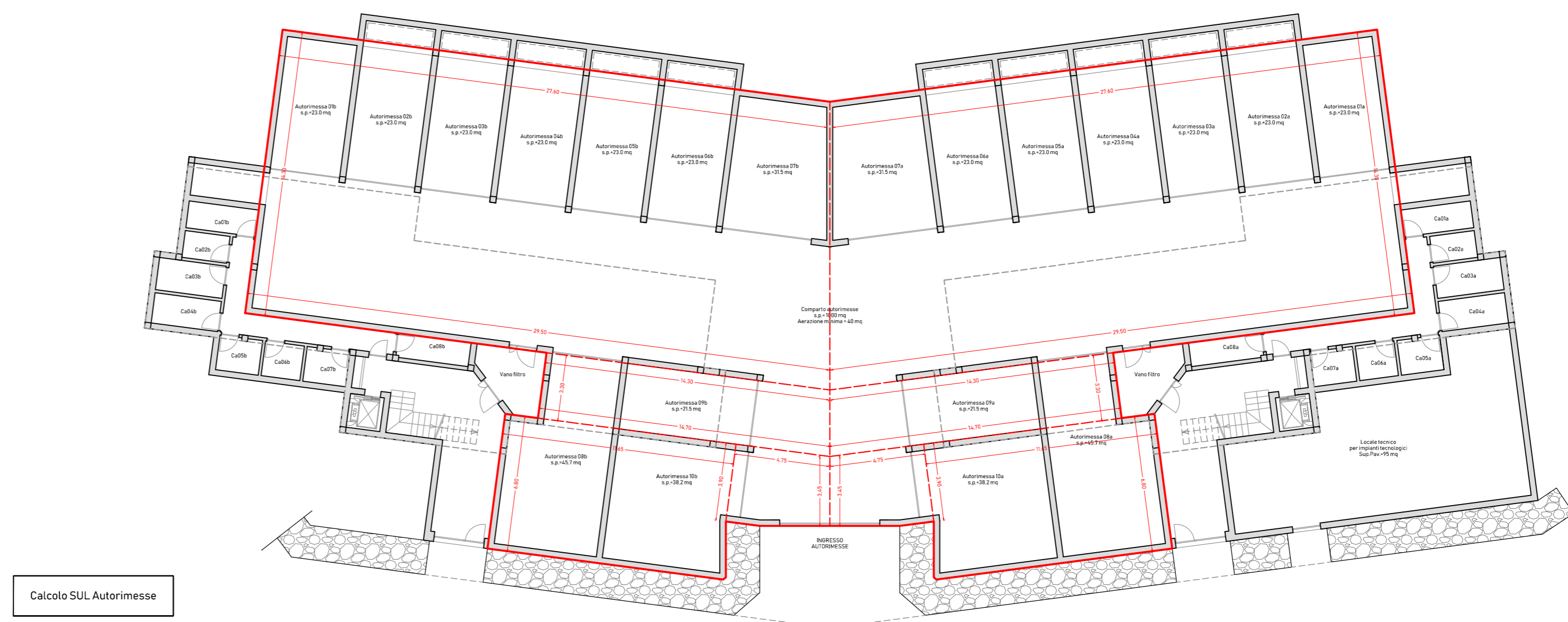
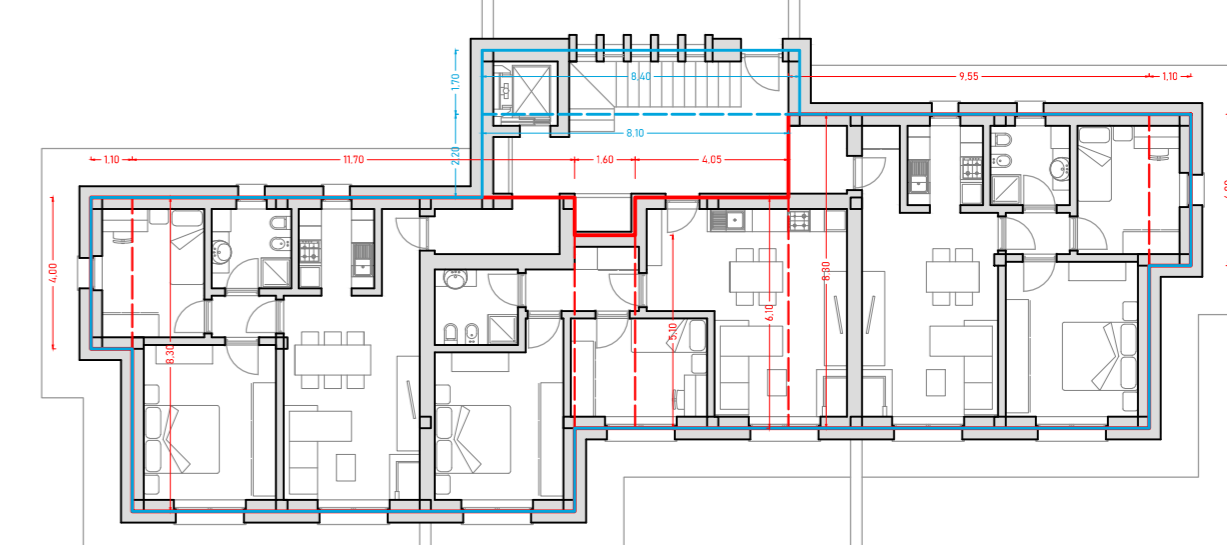
Calcolo Vol. Appart. Vacanza

PIANTA PIANO PRIMO
Scala 1:200



Calcolo Vol. Appart. Vacanza
Calcolo Sup. Coperta

PIANTA PIANO TERRA
Scala 1:200



Calcolo SUL Autorimesse

PIANTA PIANO INTERRATO
Scala 1:200

SEZIONE
Scala 1:200

